

# Bridgeport

JO MORTON



Stars All Around Quilt designed by: **Sarah Maxwell of Designs by Sarah J.**

Quilt Size: **102" x 102"** • Skill Level: **Advanced**

# Stars All Around Quilt

Introducing Andover Fabrics new collection: **BRIDGEPORT** by Jo Morton

Quilt designed by Sarah Maxwell of Designs by Sarah J.

Quilt finishes 102" x 102"

*This heirloom-quality quilt may be your most precious project that could be passed from generation to generation. Easy-to-piece blocks form rings around the central star in this medallion-style setting.*

## Cutting Directions

**Note:** Read assembly directions before cutting patches. All measurements are cut sizes and include ¼" seam allowances. A fat ⅛ is a 9" x 20"-22" cut of fabric. A fat ¼ is an 18" x 20"-22" cut. WOF designates the width of fabric from selvedge to selvedge (approximately 42" wide).

### Cutting for ONE 6" Star Block

#### Fabric 29

Cut (4) rectangles 2" x 3½"

Cut (4) squares 2"

#### Star Fabric

Cut (1) square 3½"

Cut (8) squares 2"

### Cutting for ONE 9" Star Block

#### Fabric 29

Cut (4) rectangles 2¾" x 5"

Cut (4) squares 2¾"

#### Star Fabric

Cut (1) square 5"

Cut (8) squares 2¾"

### Cutting for ONE Churn Dash Block

#### Fabric 29

Cut (2) squares 3⅞" (or 4") for HST

Cut (1) square 3½"

Cut (4) rectangles 2" x 3½"

#### Print

Cut (2) squares 3⅞" (or 4") for HST

Cut (4) rectangles 2" x 3½"

### Cutting for ENTIRE Quilt

Cut a total of (124) 3½" squares for the outer pieced border from all fabrics (excluding Fabric 29).

#### Fabric 1

Cut patches for (1) 6" Star Block

Cut patches for (1) Churn Dash Block

Cut (4-5) squares 3½" for outer pieced border

## Making the Quilt

**When cutting patches and making the blocks, refer to these labels and the list of fabrics on the last page of the pattern.**

<b>1</b> 5600-N	<b>2</b> 5600-R	<b>3</b> 5601-K	<b>4</b> 5601-N
<b>5</b> 5601-R	<b>6</b> 5602-K	<b>7</b> 5602-N	<b>8</b> 5602-R
<b>9</b> 5603-K	<b>10</b> 5603-N	<b>11</b> 5603-R	<b>12</b> 5604-K
<b>13</b> 5604-N	<b>14</b> 5604-R	<b>15</b> 5605-K	<b>16</b> 5605-N
<b>17</b> 5605-R	<b>18</b> 5606-N	<b>19</b> 5606-R	<b>20</b> 5607-K
<b>21</b> 5607-R	<b>22</b> 5608-K	<b>23</b> 5608-N	<b>24</b> 5609-K
<b>25</b> 5609-R	<b>26</b> 5610-N	<b>27</b> 5610-R	<b>28</b> 5087-KN
<b>29</b> 428-L			

### Fabric Requirements

Fabric	Requirements	Yardage
<b>Fabric 2</b>	set, blocks	1 yard
<b>Fabric 13</b>	set	2 yards
<b>Fabric 27</b>	set, blocks	⅝ yard
<b>Fabric 29</b>	blocks	5 yards
<b>2 Prints</b>	blocks	¾ yard each
	Fabrics 9, 10	
<b>4 Prints</b>	blocks	½ yard each
	Fabrics 12, 18, 23, 25	
<b>5 Prints</b>	blocks	⅔ yard each
	Fabrics 6, 8, 11, 20, 26	
<b>8 Fat ¼</b>	blocks	fat ¼ each
	Fabrics 1, 5, 7, 17, 19, 21, 22, 24	
<b>5 Fat ⅛</b>	blocks	fat ⅛ each
	Fabrics 3, 4, 14, 16, 28	
<b>Fabric 15 (+Binding)</b>		1⅓ yards
<b>Fabric 13 (Backing)</b>		9½ yards

### Fabric 2

Cut (2) squares 19", cut in half diagonally to make 4 half-square triangles (Read Step 6 first)

Cut patches for (4) 6" Star Blocks

Cut patches for (1) 9" Star Block

Cut patches for (2) Churn Dash Blocks

Cut (4-5) squares 3½" for outer pieced border

### Fabrics 3, 4, 16, 28

Cut patches for (1) Churn Dash Block

Cut (4-5) squares 3½" for outer pieced border

### Fabric 5

Cut patches for (1) 6" Star Block

Cut patches for (3) Churn Dash Blocks

Cut (4-5) squares 3½" for outer pieced border

# Stars All Around Quilt

---

## **Fabric 6**

Cut patches for (1) 6" Star Block  
Cut patches for (1) 9" Star Block  
Cut patches for (2) Churn Dash Blocks  
Cut (4-5) squares 3½" for outer pieced border

## **Fabric 7**

Cut patches for (2) 6" Star Blocks  
Cut patches for (2) Churn Dash Blocks  
Cut (4-5) squares 3½" for outer pieced border

## **Fabric 8**

Cut patches for (4) 6" Star Blocks  
Cut patches for (1) 9" Star Block  
Cut (4-5) squares 3½" for outer pieced border

## **Fabric 9**

Cut (1) square 5¼" for Center Churn Dash  
Cut (2) squares 4⅞" (or 5") for HST for  
Center Churn Dash  
Cut (4) rectangles 2½" x 5¼" for Center Churn Dash  
Cut patches for (1) 6" Star Block  
Cut patches for (4) 9" Star Blocks  
Cut patches for (2) Churn Dash Blocks  
Cut (4-5) squares 3½" for outer pieced border

## **Fabric 10**

Cut patches for (5) 6" Star Blocks  
Cut patches for (4) 9" Star Blocks  
Cut patches for (1) Churn Dash Block  
Cut (4-5) squares 3½" for outer pieced border

## **Fabric 11**

Cut patches for (2) 9" Star Blocks  
Cut patches for (1) Churn Dash Block  
Cut (4-5) squares 3½" for outer pieced border

## **Fabric 12**

Cut patches for (1) 6" Star Block  
Cut patches for (2) 9" Star Blocks  
Cut patches for (2) Churn Dash Blocks  
Cut (4-5) squares 3½" for outer pieced border

## **Fabric 13**

Cut (2) squares 2⅞", cut in half diagonally to make  
4 half-square triangles (Read Step 6 first)  
Cut (4) squares 9⅞", cut in half diagonally to make  
8 half-square triangles  
Cut (4) squares 3⅞", cut in half diagonally to make  
8 half-square triangles  
Cut (4-5) squares 3½" for outer pieced border

## **Fabric 14**

Cut patches for (1) 9" Star Block  
Cut (4-5) squares 3½" for outer pieced border

## **Fabric 15** (includes binding)

Cut (11) strips 2½" x WOF for binding  
Cut (2) squares 5⅞", cut in half diagonally to make  
4 half-square triangles  
Cut patches for (1) 9" Star Block  
Cut patches for (1) Churn Dash Block  
Cut (4-5) squares 3½" for outer pieced border

## **Fabric 17**

Cut patches for (2) 9" Star Blocks  
Cut (4-5) squares 3½" for outer pieced border

## **Fabric 18**

Cut patches for (2) 6" Star Blocks  
Cut patches for (2) 9" Star Blocks  
Cut patches for (1) Churn Dash Block  
Cut (4-5) squares 3½" for outer pieced border

## **Fabric 19**

Cut patches for (1) 6" Star Block  
Cut patches for (1) 9" Star Block  
Cut (4-5) squares 3½" for outer pieced border

## **Fabric 20**

Cut patches for (2) 6" Star Blocks  
Cut patches for (1) 9" Star Block  
Cut patches for (1) Churn Dash Block  
Cut (4-5) squares 3½" for outer pieced border

## **Fabric 21**

Cut patches for (1) 6" Star Block  
Cut patches for (2) Churn Dash Blocks  
Cut (4-5) squares 3½" for outer pieced border

## **Fabric 22**

Cut patches for (2) Churn Dash Blocks  
Cut (4-5) squares 3½" for outer pieced border

## **Fabric 23**

Cut patches for (3) 6" Star Blocks  
Cut patches for (1) 9" Star Block  
Cut patches for (1) Churn Dash Block  
Cut (4-5) squares 3½" for outer pieced border

## **Fabric 24**

Cut (2) squares 4⅞" (or 5") for HST for  
Center Churn Dash  
Cut (4) rectangles 2½" x 5¼" for Center Churn Dash  
Cut (4-5) squares 3½" for outer pieced border

## **Fabric 25**

Cut (4) squares 7¼", cut in half diagonally to make  
8 half-square triangles for Center Block  
Cut patches for (1) 6" Star Block  
Cut patches for (2) 9" Star Blocks  
Cut (4-5) squares 3½" for outer pieced border

# Stars All Around Quilt

## Fabric 26

Cut patches for (1) 6" Star Block  
 Cut patches for (2) 9" Star Blocks  
 Cut (4-5) squares 3½" for outer pieced border

## Fabric 27

Cut (4) sashes 4¾" x 26", cut crosswise  
 Cut patches for (1) 6" Star Block  
 Cut (4-5) squares 3½" for outer pieced border

## Fabric 29

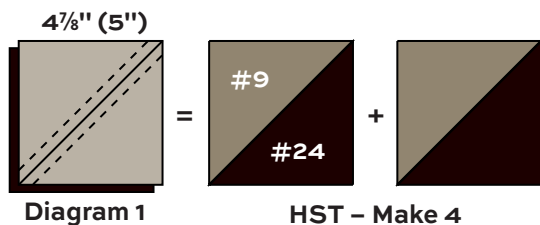
Cut (1) square 14", cut in half diagonally twice to make  
 4 quarter-square triangles for Center Block  
 Cut (4) squares 6⅞" for Center Block  
 Cut background patches for (32) 6" Star Blocks  
 Cut background patches for (28) 9" Star Blocks  
 Cut background patches for (28) Churn Dash Blocks

## Backing

Cut (3) lengths 38" x 112", pieced to fit quilt top  
 with overlap on all sides

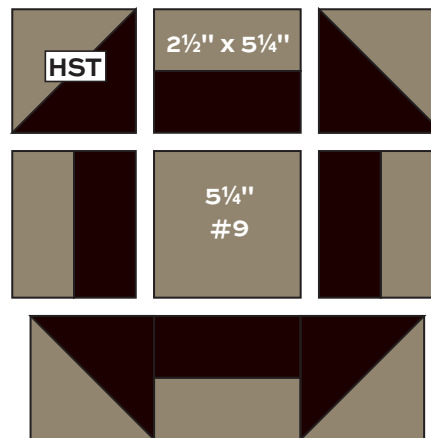
## Making the Quilt

**1. Center Churn Dash 12¾" Block:** The center is made with half-square triangles (HST). Use your favorite method to make HST that finish 4", or follow these directions. Fabric 9 and Fabric 24 squares cut 5" will be trimmed after stitching. Cut the squares 4⅞" if you do not wish to trim later. Draw a diagonal line on the wrong side of the Fabric 9 squares. With right sides together, position the marked square on top of a Fabric 24 square. Stitch ¼" on each side of the diagonal line (Diagram 1). Cut apart on the drawn line. Trim the square to 4½" if needed. Press the seam allowance toward the darker fabric. Make 4 HST.



**2.** Refer to the Center Churn Dash. Join a Fabric 9 and a Fabric 24 rectangle (2½" x 5¼") to make the pieced two-color unit. Make 4 units.

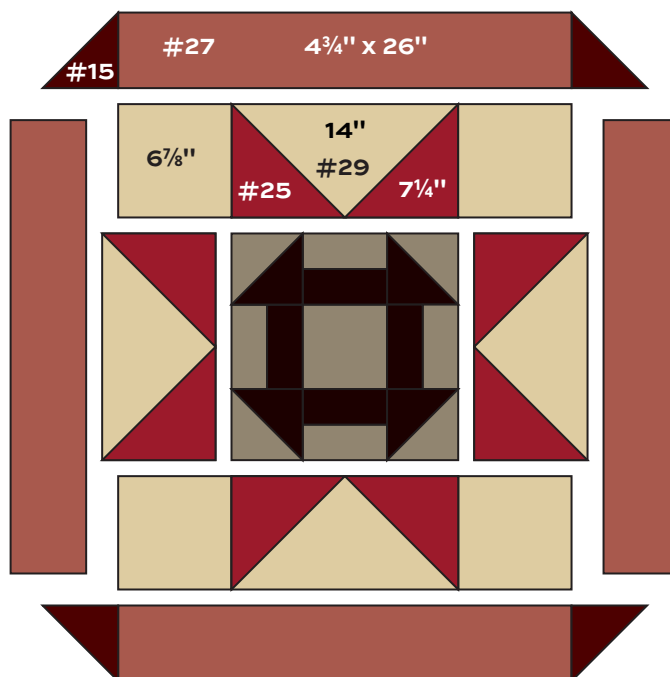
**3.** Arrange and join the HST, 4 two-color units, and the Fabric 9 square into 3 rows, turning the black fabric as shown in the diagram. Join the rows to make the Center Churn Dash. It should measure 13¼" from raw edge to edge. Set aside.



Center Churn Dash

**4. Center Block:** Sew Fabric 25 half-square 7¼" triangles to short sides of each Fabric 29 quarter-square 14" triangle to make 4 star point units. Arrange and join the Center Churn Dash, the star point units, and Fabric 29 corner squares into 3 rows. Join the rows.

**5.** Sew Fabric 27 sash strips to the sides of the pieced star. Sew Fabric 15 half-square (5⅞") triangles to ends of remaining Fabric 27 sashes. Sew to the top and bottom to make the Center Block.



Center Block

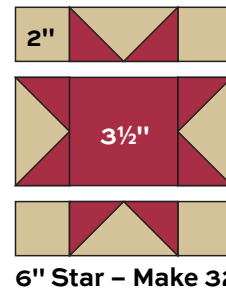
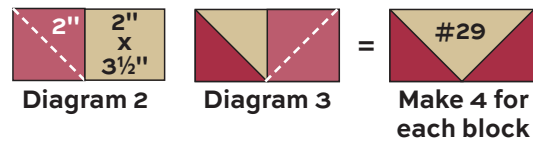
# Stars All Around Quilt

**6.** If you do not have a ruler that is 20" square, follow these directions to cut the 19" squares into half-square triangles needed for the center. Lay Fabric 2 yardage on a flat surface. Position the largest square ruler you have near the bottom left corner of the fabric. Make a dot at the bottom left corner of the ruler. Place a yardstick flush against the bottom edge of the square ruler and mark the fabric 19" away from the bottom left corner. Draw a line from the left corner mark to the right corner 19" mark. This is the bottom edge of the square you need. To draw the line that is the left edge of the square, place the yardstick against the left side of the square ruler, and mark a line that is perpendicular to the bottom left dot, 19" away.

To draw the other two sides, use the yardstick to measure and mark dots 19" away from bottom and left sides. Connect the corner dots and cut out the 19" square. Without shifting the fabric, mark a diagonal line in one direction, using the yardstick as a guide. Cut along the diagonal line to make 2 half-square triangles. Repeat these steps to measure and cut the other 2 half-square triangles. Matching centers, sew the Fabric 2 triangles to the sides of the Center Block as shown in the Quilt Assembly. Press the triangles away from the center.

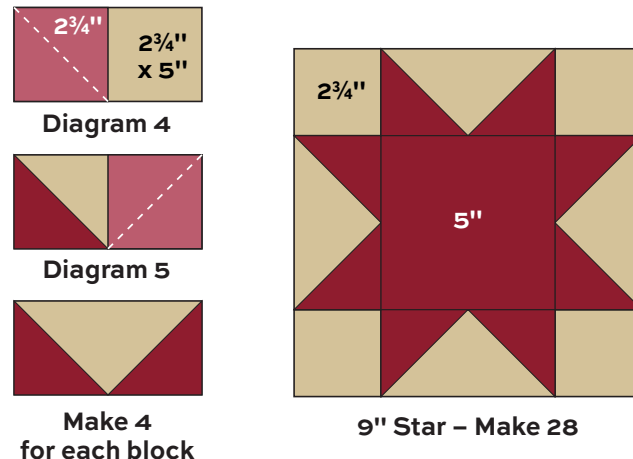
*For the remainder of the directions, refer to the Quilt Assembly and the cutting directions for colors for the various blocks.*

**7. 6" Stars:** Fast Flying Geese are used in these blocks. Refer to the cutting list and choose a 6" Star Fabric and Fabric 29 for each star. Draw a diagonal line on the 2" star fabric squares. Position a marked square as shown on one end of a Fabric 29 (2" x 3½") rectangle (Diagram 2). Stitch on the marked diagonal line. Cut away the excess fabric. Press the corner up. Repeat this step on the opposite end of the rectangle (Diagram 3). Make 4 Flying Geese alike. Arrange the 4 Flying Geese, the 3½" Star Fabric square, and 4 Fabric 29 (2") squares as shown. Join the parts, and then join the rows to make a 6" Star. It should measure 6½" from edge to edge. Make a total of 32.



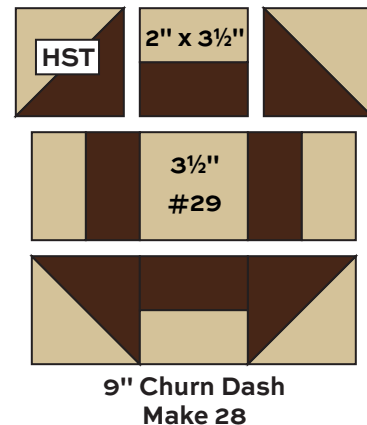
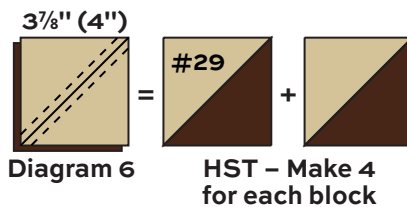
**8.** Feel free to arrange the blocks as you wish, or follow the Quilt Assembly to position the blocks in the order shown. Join 7 Star Blocks to make a side border. Sew to one side of the quilt. Repeat for the opposite side. Join 9 Star Blocks to make the top border and sew to the quilt. Repeat for the bottom border.

**9. 9" Star Blocks:** Repeat Steps 7 and 8 to make 28 stars, following the measurements shown in Diagram 4. Make a total of 28 Stars that finish 9". Referring to the Quilt Assembly, join and sew 6 Stars to 2 sides of the quilt. Join and sew 8 Stars to each remaining side.

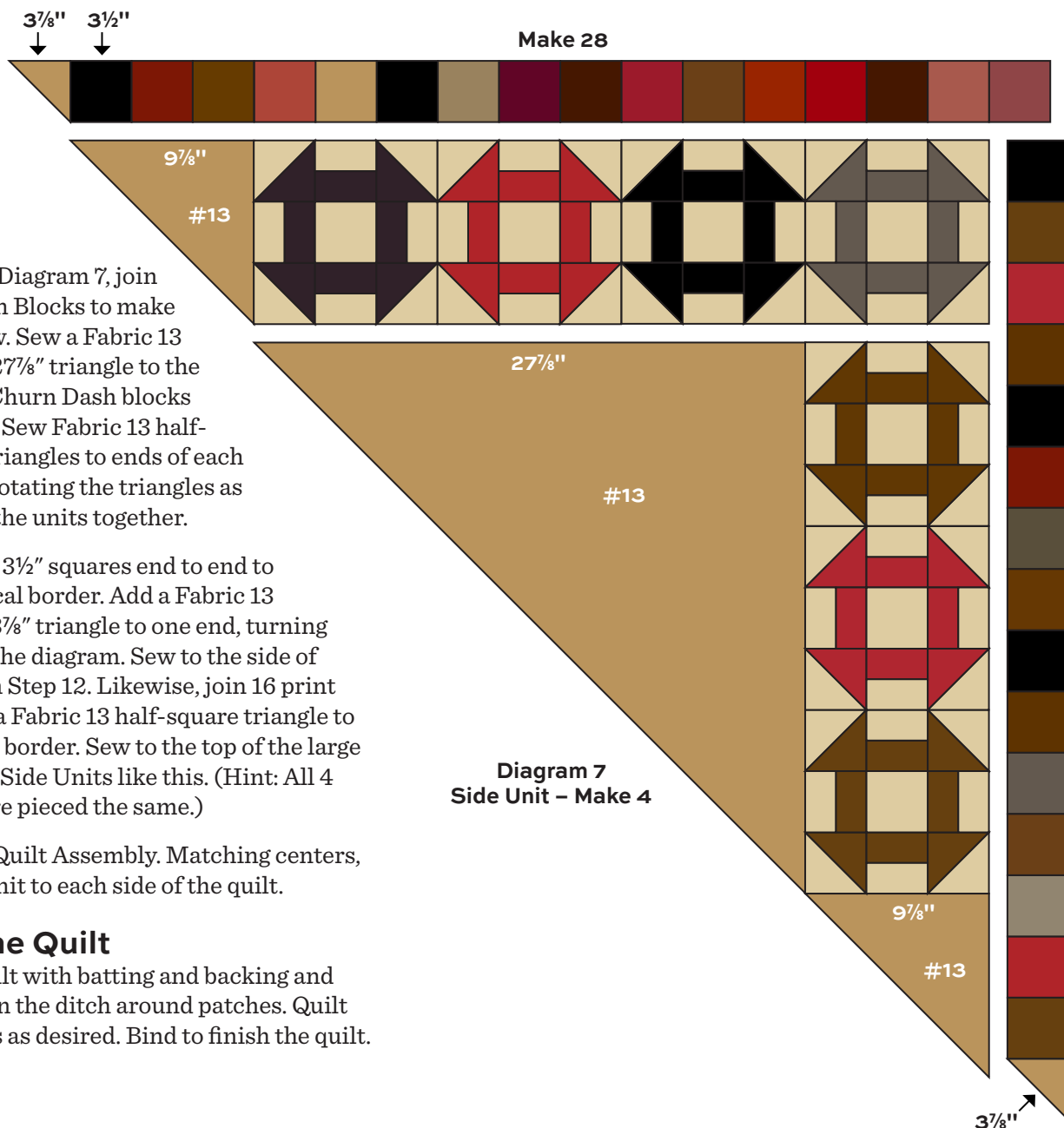


# Stars All Around Quilt

**10. 9" Churn Dash Blocks:** Refer to Steps 1-3 for directions. Make 4 HST for each block, using Fabric 29 and Print 3 $\frac{7}{8}$ " (or 4") squares (Diagram 6). Trim HST to 3 $\frac{1}{2}$ " if needed. Use Fabric 29 and Print 2" x 3 $\frac{1}{2}$ " rectangles to make 4 two-color units. Join the center square, 4 HST, and 4 two-color units into 3 rows, and then join the rows. Make a total of 28 Churn Dash Blocks.



**11. Side Units:** Refer to Step 6 to measure and cut the large Fabric 13 triangles. Measure and mark a 27 $\frac{7}{8}$ " square and cut square out. Cut in half once diagonally. Repeat with a second square to make 4 half-square triangles. Also cut the Fabric 13 smaller squares (9 $\frac{7}{8}$ " and 3 $\frac{7}{8}$ ") in half diagonally.



**12.** Referring to Diagram 7, join 3 Churn Dash Blocks to make a vertical row. Sew a Fabric 13 half-square 27 $\frac{7}{8}$ " triangle to the side. Join 4 Churn Dash blocks horizontally. Sew Fabric 13 half-square 9 $\frac{7}{8}$ " triangles to ends of each pieced row, rotating the triangles as shown. Sew the units together.

**13.** Join 15 print 3 $\frac{1}{2}$ " squares end to end to make a vertical border. Add a Fabric 13 half-square 3 $\frac{7}{8}$ " triangle to one end, turning as shown in the diagram. Sew to the side of the unit from Step 12. Likewise, join 16 print squares and a Fabric 13 half-square triangle to make the top border. Sew to the top of the large unit. Make 4 Side Units like this. (Hint: All 4 Side Units are pieced the same.)

**14.** Refer to the Quilt Assembly. Matching centers, sew a Side Unit to each side of the quilt.

## Finishing the Quilt

**15.** Layer the quilt with batting and backing and baste. Quilt in the ditch around patches. Quilt large patches as desired. Bind to finish the quilt.

# Stars All Around Quilt



Quilt Assembly

# Bridgeport JO MORTON



5600-N



5600-R



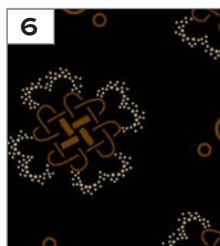
5601-K



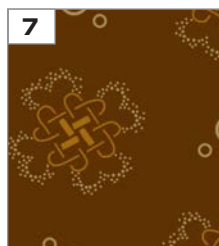
5601-N



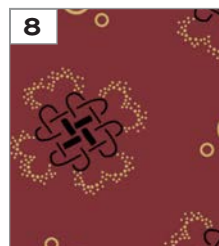
5601-R



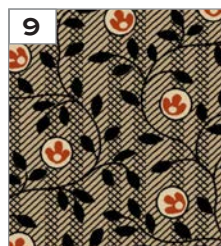
5602-K



5602-N



5602-R



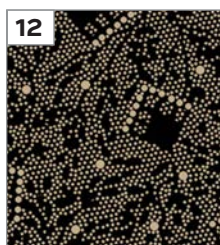
5603-K



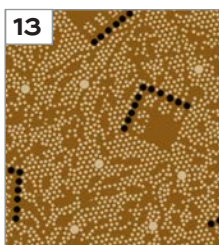
5603-N



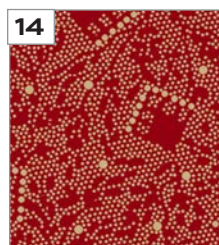
5603-R



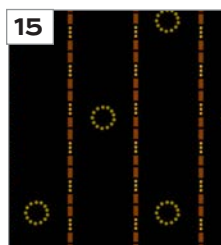
5604-K



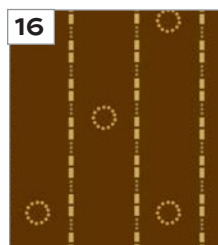
5604-N



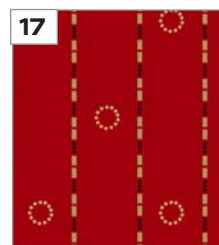
5604-R



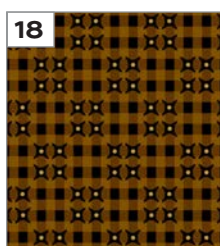
5605-K



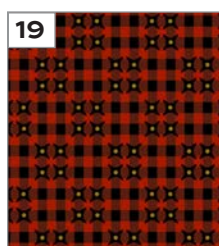
5605-N



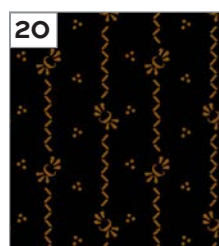
5605-R



5606-N



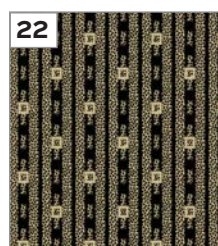
5606-R



5607-K



5607-R



5608-K



5608-N



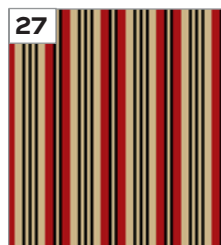
5609-K



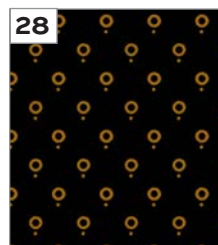
5609-R



5610-N



5610-R



5087-KN



428-L

*Additional fabric  
from Cottage Cloth  
by Renée Nanneman*

Yardage is for entire Stars All Around Quilt.

All fabrics are used in quilt pattern. Fabrics shown are 75% of actual size.

**Batting:** 110" x 110"  
**Backing:** 9½ yards